



Forward ▶

◀ Back

Update PDF

Show online

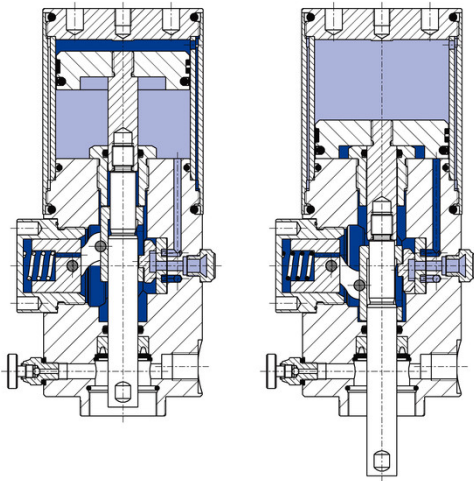
Function Grease Pump Reliable pumps with modern technologies

The Air-operated Grease Supply Systems of ABNOX operate with 2 up to 10 bar compressed air depending on the desired pressure ratio. The cylinder of the pump will automatically be switched before reaching the end position which generates the upward and downward stroke necessary for delivering.

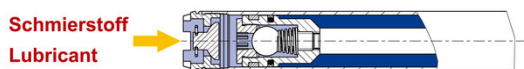
This precise, mechanical switch-over is integrated inside the pump head and therefore well protected against external influences and manipulation.

The well-engineered geometric form of the valve and the sleeve with spring supported toggle guarantee a safe switching.

ABNOX air-operated grease pump



ABNOX suction system pressure ratio 5:1 / 10:1



ABNOX suction system pressure ratio 20:1 / 60:1

